



APARTMENT 3 MASTER WILLIAMS PLACE FOLKESTONE, CT20 1FF

£975 PER MONTH

Welcome to this contemporary apartment situated in the sought-after Master William's Place, Folkestone. This new build property, completed in 2025, spans an impressive 554 square feet and is designed to offer a comfortable and stylish living experience. With one reception room and one bedroom, it is perfectly suited for individuals or couples looking for a modern home.

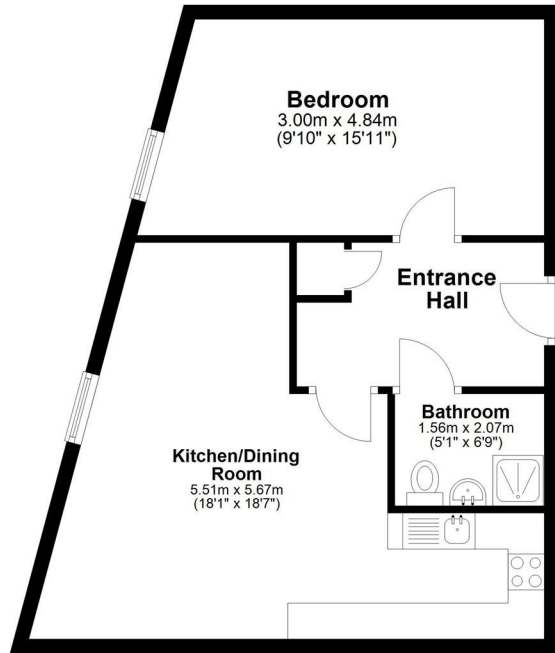
The apartment features a well-appointed kitchen, equipped with high-quality Bosch appliances. This ensures that you have everything you need to create delicious meals, all while enjoying a sleek and modern aesthetic. The thoughtful design of the space makes it not only functional but also a pleasure to use.

One of the standout features of this building is its exceptional internet connectivity. It boasts Folkestone's first-ever 10Gb/s Lease Line, providing residents with super-fast Wi-Fi access. This is particularly advantageous for those who work from home or enjoy streaming and gaming, as it allows for seamless online experiences without interruptions. Access to this service is available at an

**WEST END
ESTATES**
LETTINGS AND PROPERTY MANAGEMENT

Ground Floor

Approx. 51.5 sq. metres (554.9 sq. feet)



Total area: approx. 51.5 sq. metres (554.9 sq. feet)

Whilst every attempt has been made to ensure the accuracy of the floorplan contained here, measurements of doors, windows, rooms and any other items are approximate and no responsibility is taken for any error, omission or mis-statement. This plan is for illustrative purposes only and should be used as such by any prospective purchaser. The services, systems and appliances shown have not been tested and no guarantee as to their operability or efficiency can be given.
Plan produced using PlanUp.



Energy Efficiency Rating		
	Current	Potential
Very energy efficient - lower running costs		
(92 plus) A	83	
(81-91) B		
(69-80) C		
(55-68) D		
(39-54) E		
(21-38) F		
(1-20) G		
Not energy efficient - higher running costs		
England & Wales		EU Directive 2002/91/EC

EPC Rating: B Council Tax Band: A

Agents Note: Whilst every care has been taken to prepare these particulars, they are for guidance purposes only. All measurements are approximate and are for general guidance purposes only and whilst every care has been taken to ensure their accuracy, they should not be relied upon and potential buyers/tenants are advised to recheck the measurements

West End Estates Folkestone
7 Sapper Row
Folkestone
Kent
CT20 3WT

01303 478777
office@westend-estates.co.uk

**WEST END
ESTATES**
LETTINGS AND PROPERTY MANAGEMENT